

Rx Lab Management System

a module of OWStudio

developed by optoWare[®]

Rx Lab Management System

Key features:

- Production Lab configuration
- Data base & product management
- Lens calculation
- Support of different freeform LDS
- Job management
- Label print
- User rights management

Manage all your blanks, designs, tools, blocking systems and shapes.

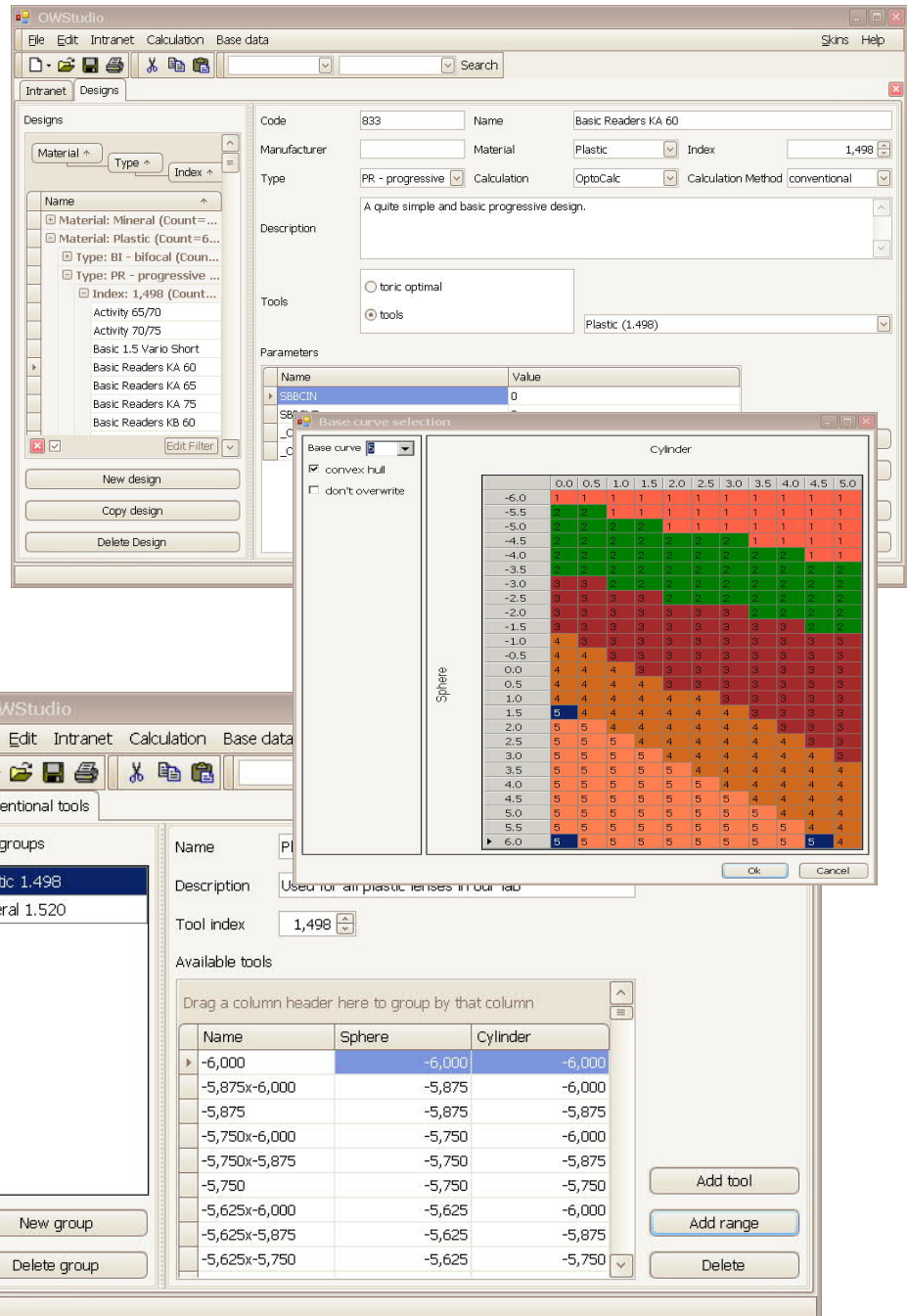
Base curve selection made simple, other two dimensional parameters are configured the same way.

Use tool sets for different kinds of designs

Configure all details for your designs

Define the products

Create different sets of conventional tools



Lens Calculation, Job Management and Log Analyzer

Calculate automatically or recalculate manually existing jobs.

Several vies helps to Understand how the calculation has come to the result.

Flexible creation of the user interface according to the needs.

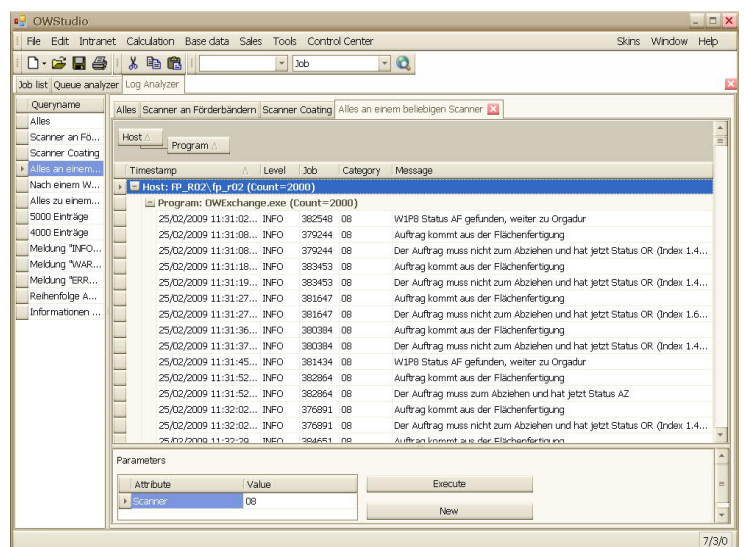


View the details of a job.
Data is grouped into views.

Browse and filter all jobs in a job list.
Customize the views (which data actually to display).

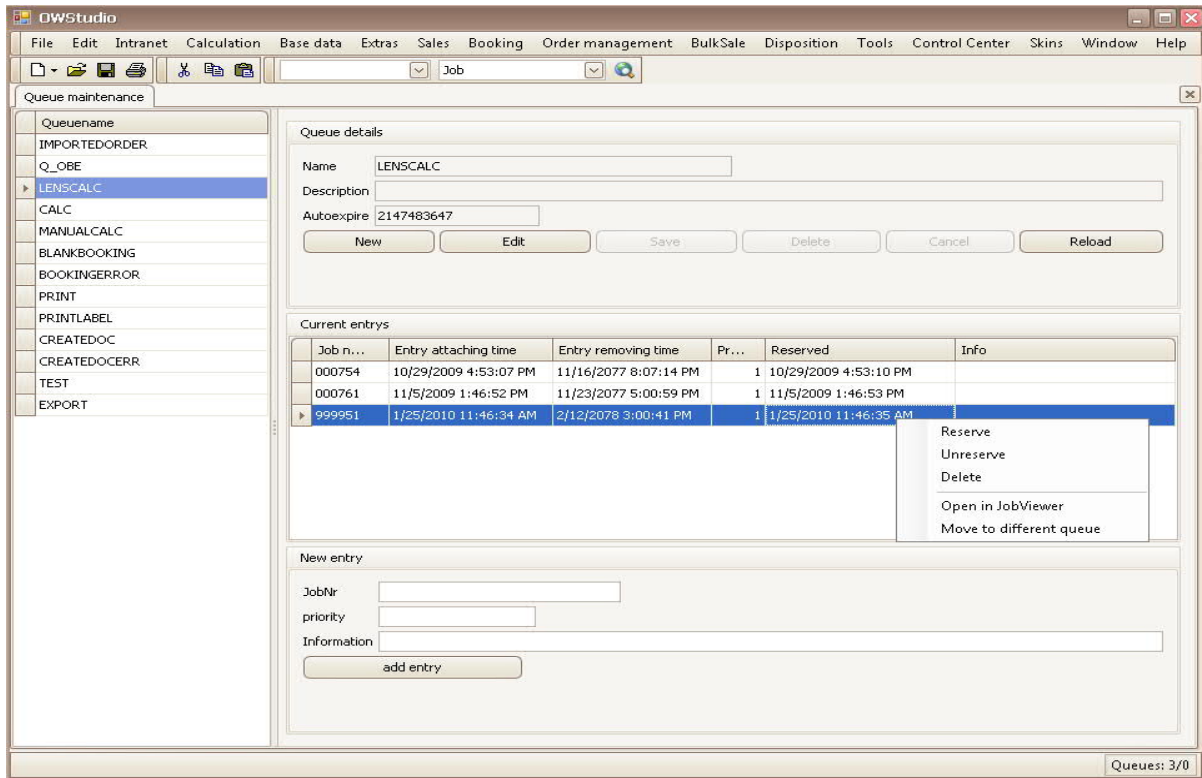
Define your own queries on log data.
Analyse and improve your production.
What is a given machine currently doing? How many jobs are pending where?

All displayed items can be linked to the machines or to the job details.
Integrate your own data sources (xml based).



Queue Management

In many cases it is useful to insert jobs into queues to process them sequentially. Jobs can also be added to queues, deleted from queues or moved to a different queue. Further it is possible to add, modify and delete queues in OWStudio.



- Workflows give an overview of what happens in the communication with the machines
- Detailed Logs of communication runtimes with the machines are available
- Creation and management of users. Profiles can be used to change the permissions of a user group

...and many more...

References Suppliers

