

**B2B Distributions System**

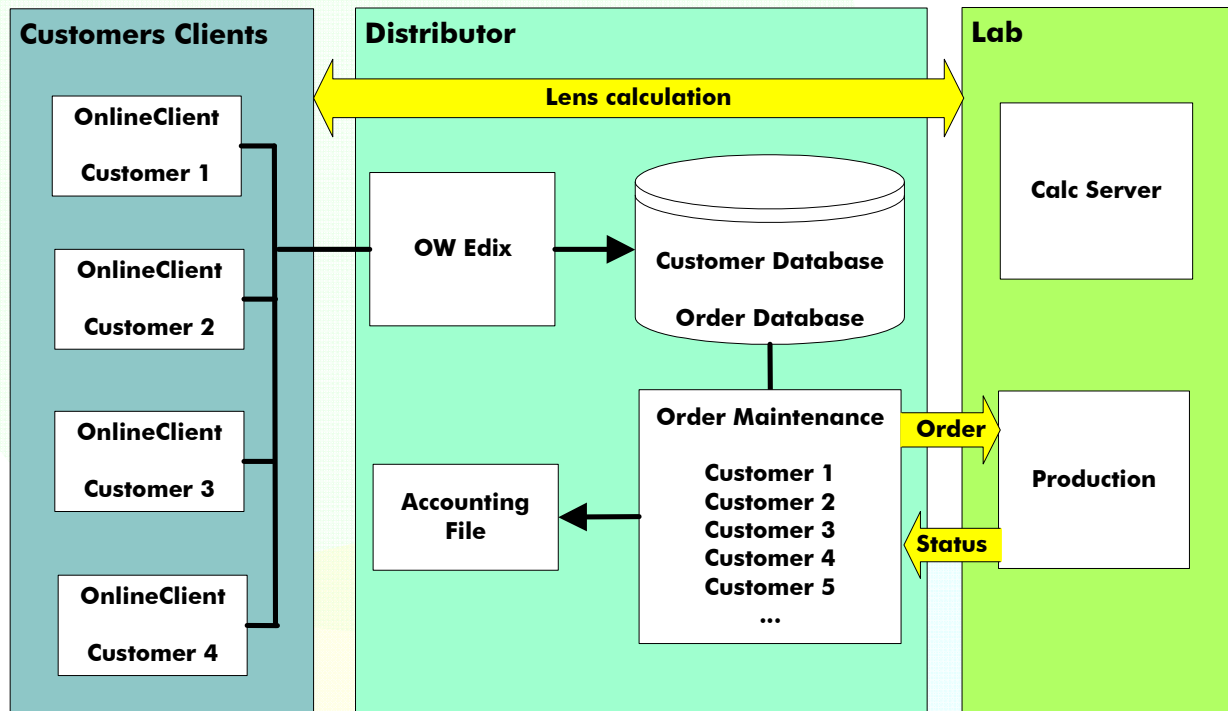
**developed by OptoWare®**

## B2B Distribution System Developed by OptoWare®

Discover the most modern technology of B2B Distribution System.

You can give the software to your distributor who can start a B2B business with his customers and send the orders then to your Lab.

Order Flow



### Your advantages:

#### XML Export to accounting system

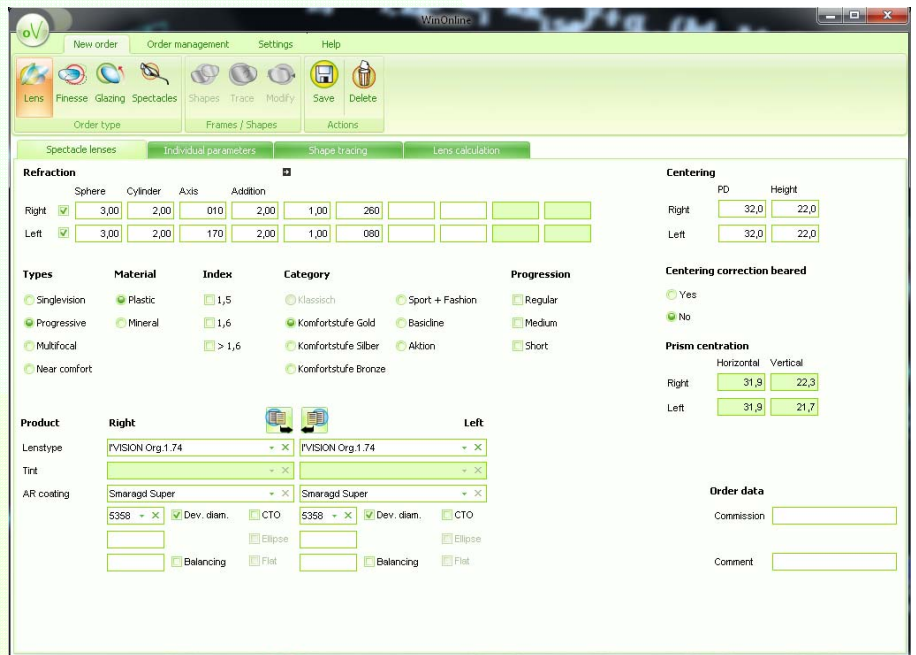
- export of the standard B2Boptics XML (documentation is attached)
- the export contains standard prices of actual SF6 price list
- the export contains product texts
- The customer takes all information like client number, client comments, order data out of the XML

#### Order maintenance internal (Distributor's office)

All incoming orders will be collected in the internal order database with status "new". Distributor will have a look in every order and will set the state to "send". Then the orders can be send to your lab's order server. With the send process, the export XML for the accounting system will be generated.

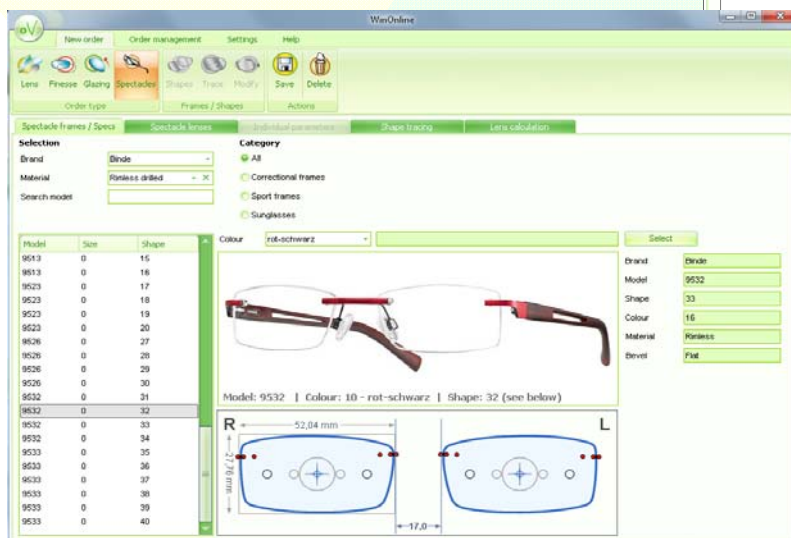
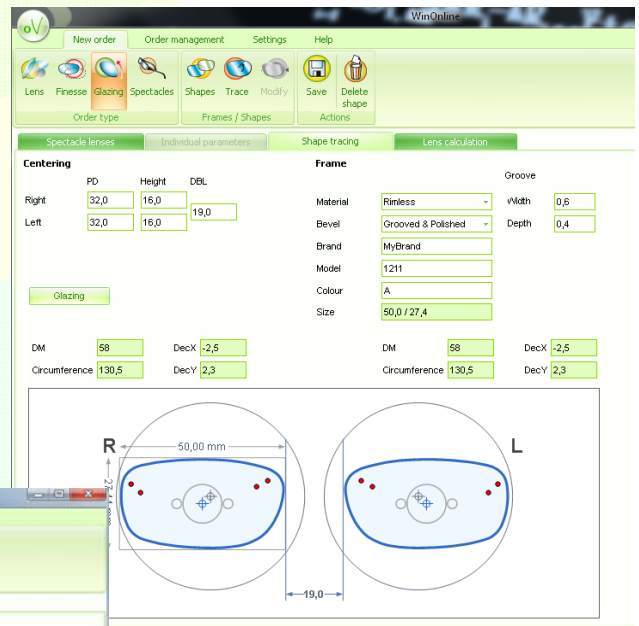
## Order Entry and Edging System

- Supported order types: Lens, Frame, Specs, Bundles of frames and lenses
- Completely relies on industry standard SF6 (product catalog) and B2BOptic (XML order format)
- Tracer compatibility to Nidek, Weko, Essilor, Hoya, National Optronics, Briot, Takubomatic, INDO/Schöne, Topcon.
- Features eg. product filters are customizable to your needs
- Online calculation if the OptoWare RX Lab software is running
- Multilingual support (German, English, French, Dutch, Italian and Spanish). If there is a need of other languages, OW can support the translation with a tool which will be provided to the customer.



## Shape tracing Edging Data and Glazing Data

Take over or/and edit the centering data from lens / order entry.  
Trace the shape.  
Choose the frame and shape data from a database.  
Accommodate you edging data.  
Tag the drill holes inside of Shape.

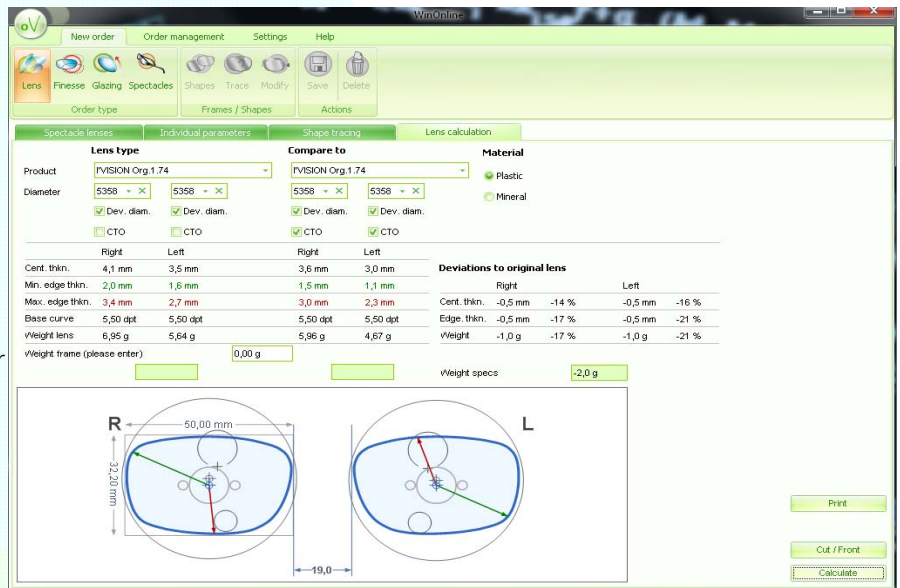


## Spectacles data

Allow to manage standard frames and stock frames as well as the form database.

## Lens calculation and calculation consulting printout

Use the form data to calculate the lens thickness, for thickness optimization and consultancy purposes. Allow to compare two different lenses / lens types and to show the deviations between them. Also it is possible to show the thickness of lenses on every position inside of shape or inside of original lens diameter. Print your consultancy purposes or / and create a PDF-file



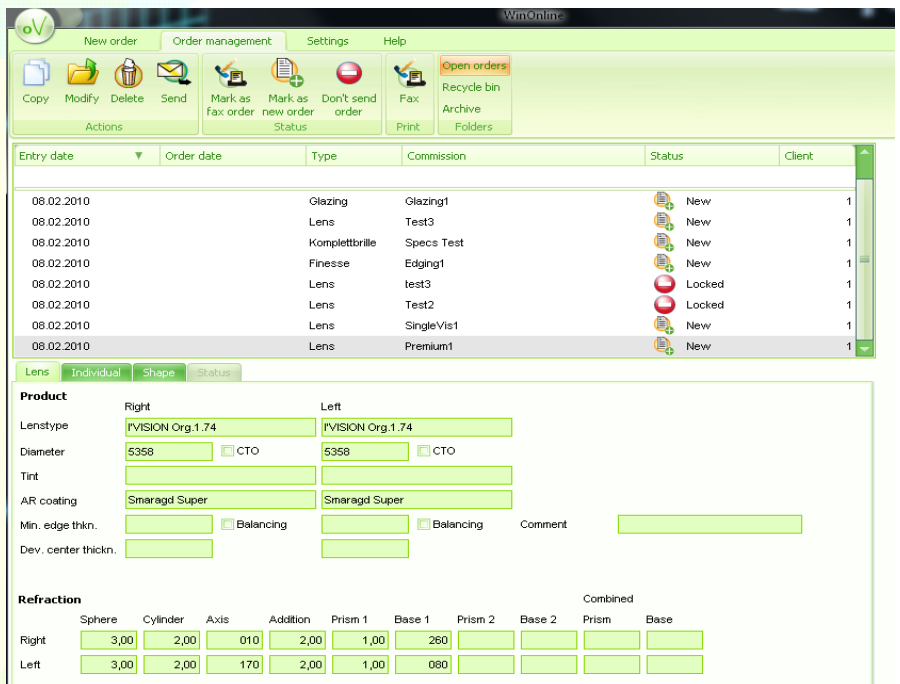
## Order Management/ OrderTracking and searching for open orders

Manage all orders in an overview.

Check the state of order

Search the orders for different attributes.

Check the order and shape data.



## List of the devices presently supported

### Tracers

Weco Trace II  
Weco Trace III  
Weco FormTracer 3-D plus  
Briot Scanform net  
Briot Scanform net 2  
Briot Accura Cx  
Nidek RD 100 (projected)  
LT700 Nidek  
Nidek LT900  
Nidek LE-7070SX  
Nidek LE-9000 SX  
National Optronic 4TI (OMA)  
National Optronic Dimension

Essilor Phi  
Essilor Kappa (OMA)  
Essilor Kappa (ESL3D)  
Essilor Tess  
Essilor eTess  
Hoya GT 1000  
Hoya GT 3000 (HOYA3D)  
Hoya GT 3000 (OMA)  
Hoya UT 1000  
INDO/Schöne 3D Teleform  
INDO/Schöne 3D Combimax  
Topcon FR-50  
Takubomatic