

RX Lab Management System

a part of OW Studio

developed by OptoWare®

RX Lab Management System

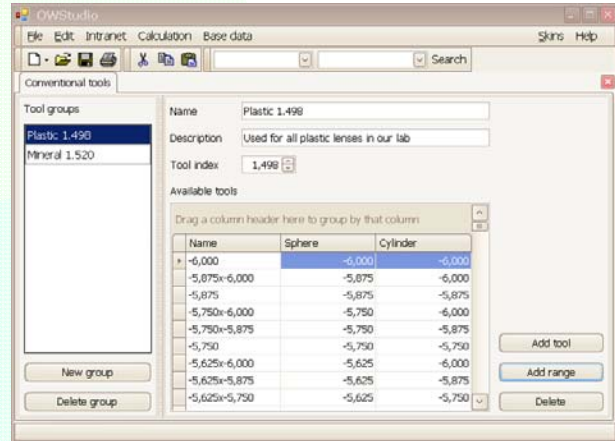
A part of OW Studio, developed by OptoWare®

The configuration of the base data is part of OWStudio. Manage all your Blanks, Designs, Tools, Blocking systems and shapes. Configure different kind of access rights for different users.

Create different sets of conventional tools

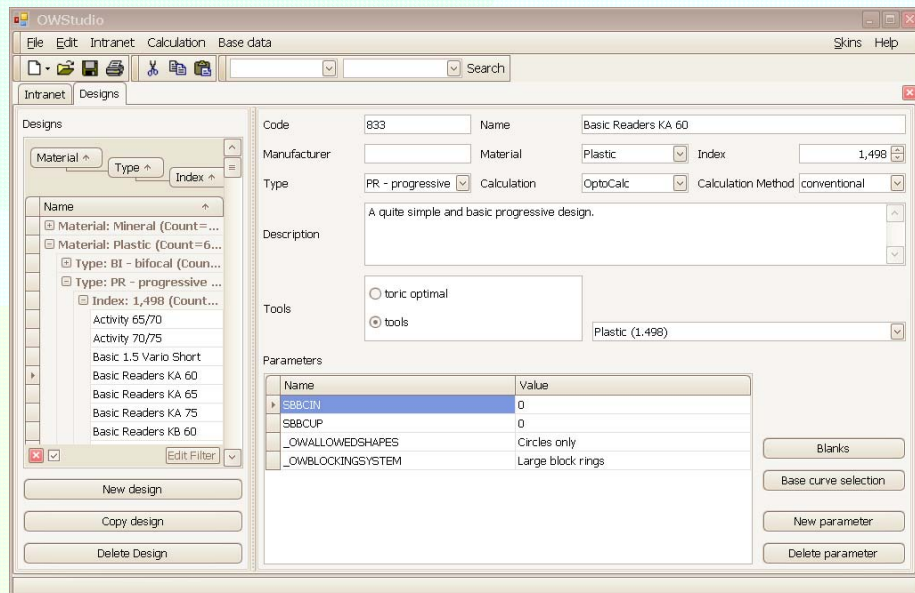
Use those tool sets for different kinds of designs

Configure all the details for your designs

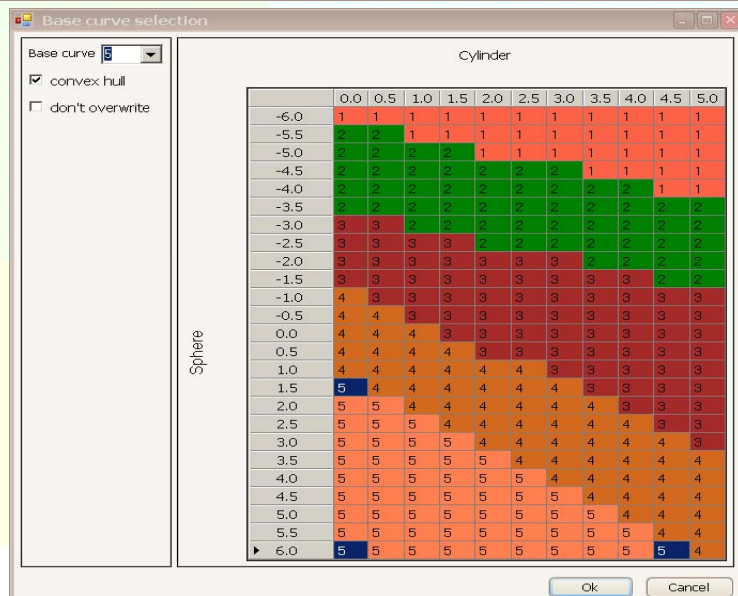


Define the blanks that you want to use in your design.

Specify parameters for a blank that are valid in a given design only.



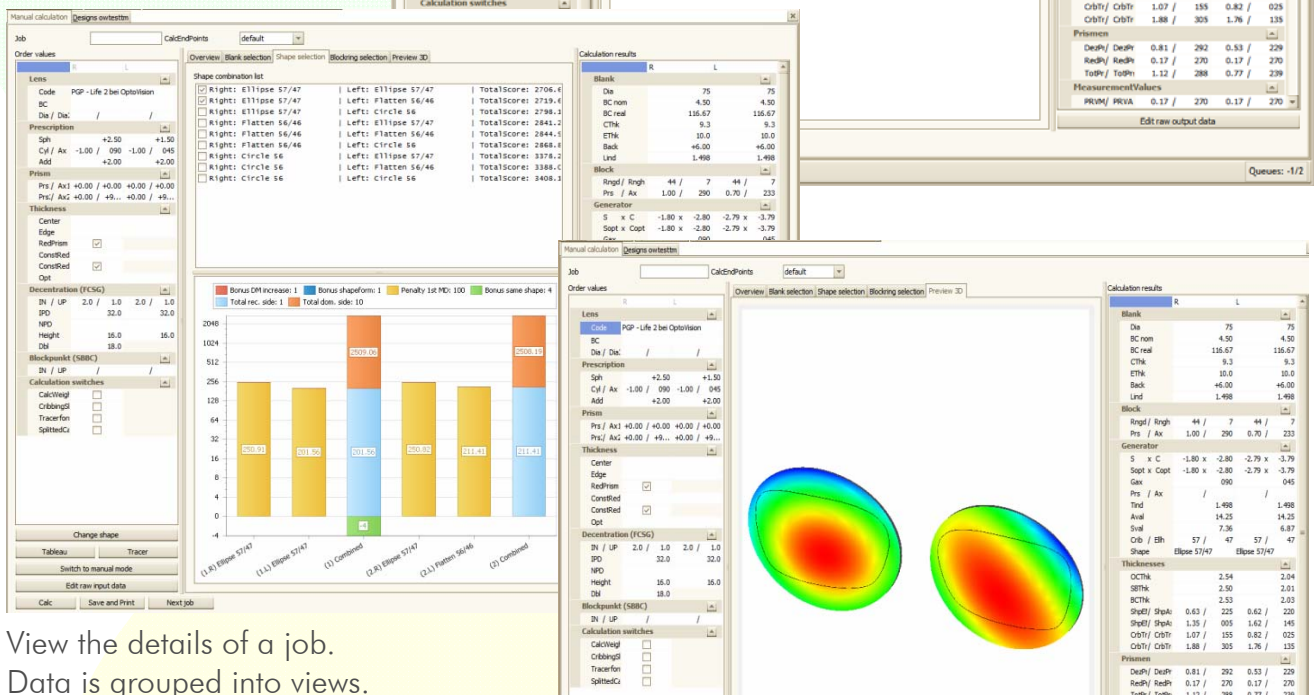
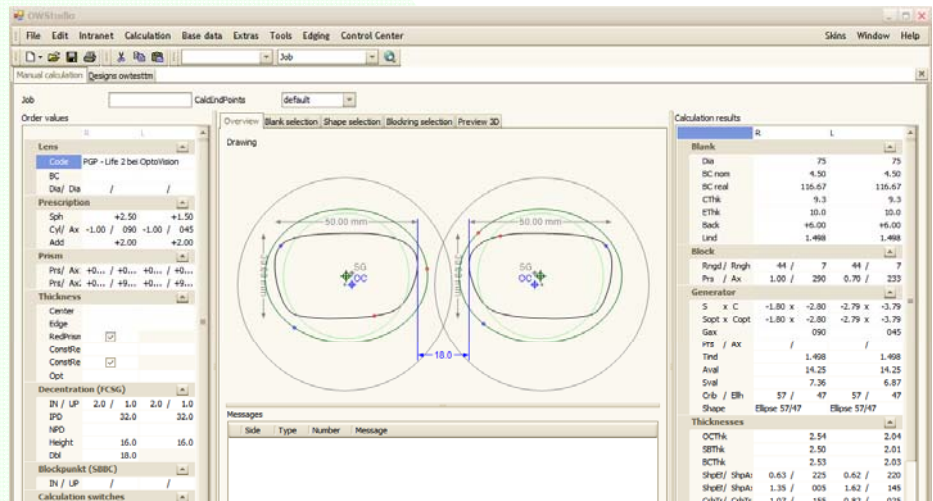
Base curve selection made simple, other two dimensional parameters are configured the same way.



Lens Calculation, Job Management and Log Analyzer

Calculate manually or recalculate existing jobs. Define which values are presented and changeable as input and output.

Show different information as the blank selection, blocking ring selection, shape selection and 3D thickness preview.



View the details of a job. Data is grouped into views.

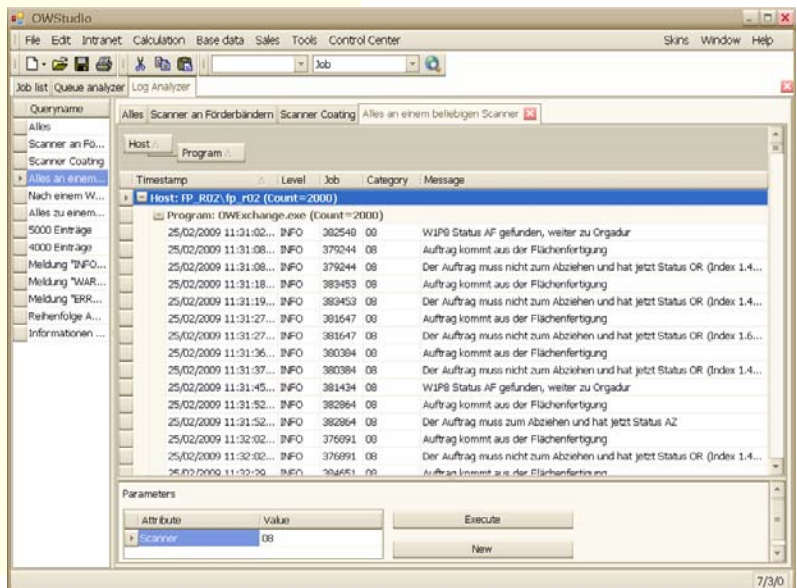
Browse and filter all jobs in a job list. Customize the views (which data actually to display).

Define your own queries on log data. Analyze and improve your production.

What is a given machine currently doing? How many jobs are pending where?

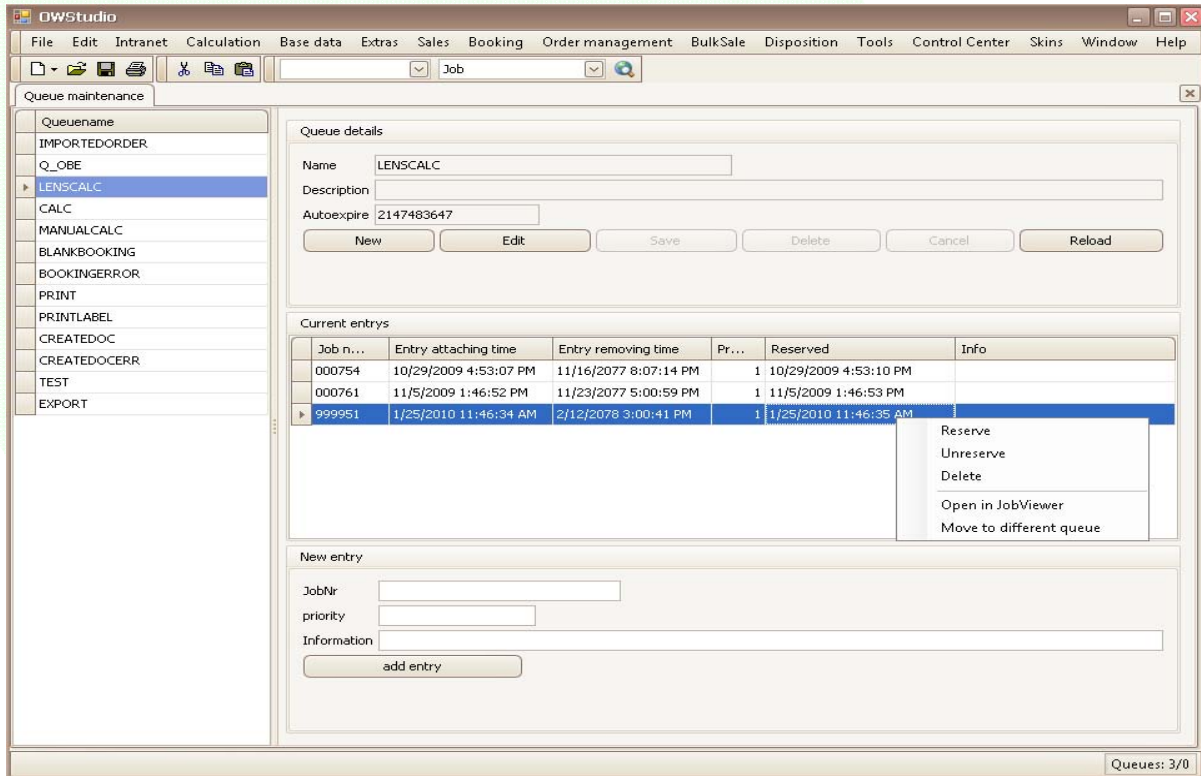
All display items can be links to machine or job details.

Integrate your own data sources (xml based).



Queue Management

In many cases it is useful to insert jobs into queues to process them sequentially. Jobs can also be added to queues, deleted from queues or moved to a different queue. Further it is possible to add, modify and delete queues in OWStudio.



- Workflows give an overview of what happens in the communication with the machines
- Detailed Logs of communication runtimes with the machines are available
- Create and manage users. Profiles can be used to change the permissions of a group of users

...and many more...

References Suppliers

